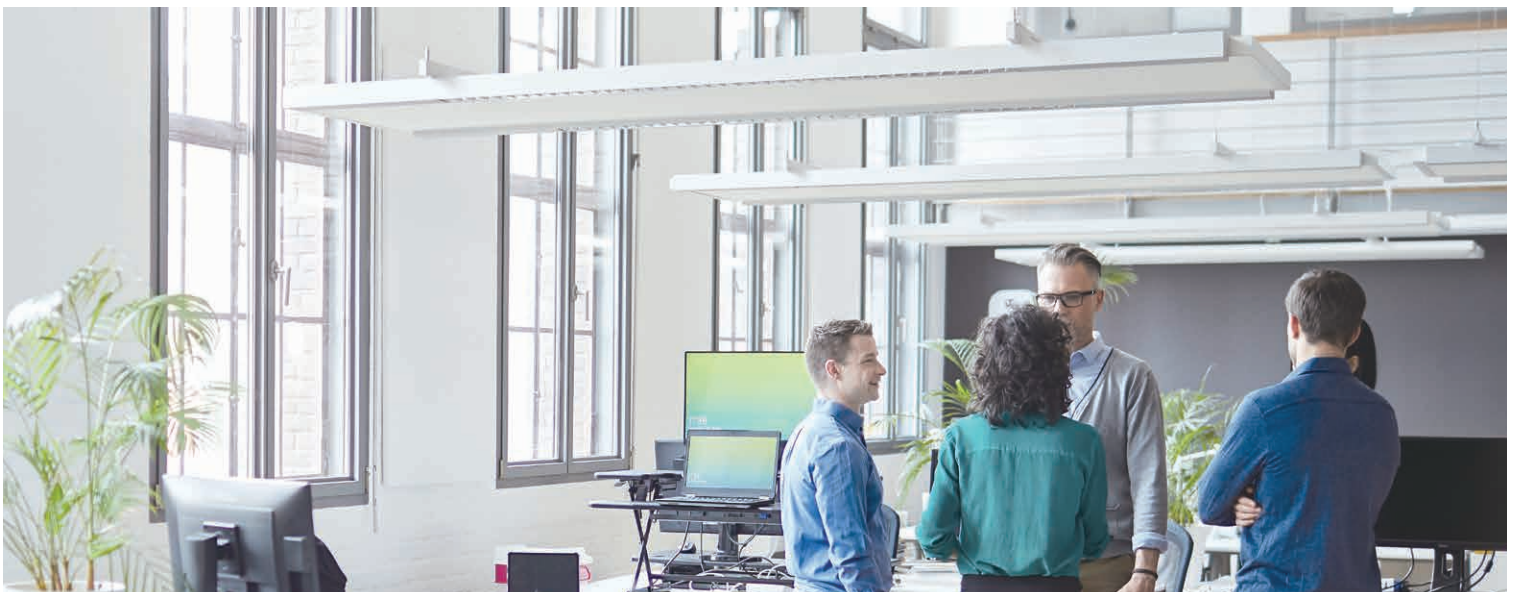




A4 Monochrome Multifunction Printer

Apeos 5330 / 4830



# Hello to the future of work

The "Apeos" series offers advanced features with high security level and easy operability to help business diversify with times.



- 

**Catering to your everyday business needs**
- 

**Quick and simple operability**
- 

**Safeguard important information**
- 

**Initiatives for environmental consideration**

## Apeos 5330/4830 A4

Copy/Print	Scan	Printing Resolution	Control Panel	Environmental Technology
Monochrome 5330 <b>55 ppm (Letter) / 53 ppm (A4)</b> *1 4830 <b>50 ppm (Letter) / 48 ppm (A4)</b> *1	Color / Monochrome 5330 <b>105 ppm</b> 4830 <b>96 ppm</b> *2	<b>1,200 × 1,200 dpi</b> *3	Tilted Color Touchscreen 5330 <b>7 inches</b> 4830 <b>5 inches</b>	LED printhead Super EA-Eco toner

•Mobile supported •Wireless LAN supported

\*1: Print speed may drop due to image quality adjustment.

\*2: When using the Duplex Automatic Document Feeder. (1 pass, 2 sided scanning. Our Standard Paper (A4), 200 dpi, to Folder.) Scanning speed varies by the document.

\*3: Print Function.

# Catering to your everyday business needs

## Speedily usable & wide variety of supporting papers

### High-speed printing of 53 ppm\*<sup>1</sup> monochrome.

- Fast Boot Mode prepares the operation panel in 7 seconds\*<sup>2</sup>
- FCOT: Prints out in about 6.0 sec. on B/W.
- Useful for administrative / counter services when high-volume printing is performed

\*1: For Apeos 5330. 48 ppm for Apeos 4830. For A4 size paper. Speed may drop due to image quality adjustment.

\*2: Depending on the status of the main unit and configuration of options, it may not operate or take more than 7 seconds.

### Trays/feeders holding a maximum of 2,350 sheets\*

- Despite being compact size, the Apeos 5330 series comes standard with trays that can hold as many as 700 sheets\* (Bypass Tray and Standard Tray can hold 150 sheets\* and 550 sheets\* respectively).
- Up to three optional 550-Sheet Feeders can be installed to have one Bypass Tray and four trays in total.

\* For 80 gsm paper.

\* Optional.



### From printing on envelopes and thick paper to producing promotional materials

- Automatic adjustment of pressure to print envelopes.
- A smooth paper feed path so that thick paper can run stably
- Supports long paper up to 215.9 x 520 mm\*

\* Long papers are fed from Bypass Tray.



## Quick scanning of high-volume originals

### Single-pass color duplex scanning of 105 ppm\*<sup>1</sup>.

- Equipped with Duplex Automatic Document Feeder (DADF)
- You can scan both sides of the original at once. Since the original is not inverted, it protects the original document
- You can load originals up to 100 sheets\*<sup>2</sup>

\*1: For Apeos 5330. 96 ppm for Apeos 4830. When the DADF is used. (1 pass, 2 sided scanning. Our Standard Paper (A4), 200 dpi, to Folder.) Scanning speed varies by the document.

\*2: For Apeos 5330. 50 sheets for Apeos 4830.

## Small but excellent

- Super EA-Eco toner, toner that has the industry's smallest particle size, reproduces small characters and thin lines sharply and creates a smooth gradient.
- Image Enhancement processing reproduces diagonal lines and the outlines of characters, which can become jagged when printed, more smoothly.

## Space-saving IC card reader\*

- Designed to save space, the Apeos 5330 series can house a built-in IC card reader.

\* Optional.

## Directly printing from or scanning to USB flash drive

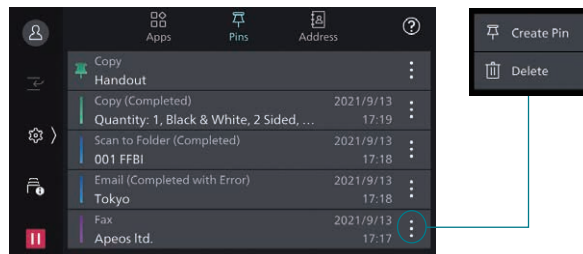
- It is possible to print documents stored on a USB flash drive or save scanned data to the USB flash drive without using a computer.

# Quick and simple operability

## Simple layout with easy navigation

Black and gray tone UI gives better contrast for easy recognition.

- Icons are evenly spread for easy recognition
- Consistent operation steps of each function for easy recall
- Home screen personalization for ease of access to commonly used functions
- Pin regular settings for registering frequent or repeated jobs
- Clear visible light notifications for completed or error jobs
- Subtle sound notification for alert and attention



## User-friendly 7-inch\* color touch panel

- Customisable screen icon layout
- Makes your routine workflow simple and smooth
- Provides the same operability as A3 multifunction devices

\* For Apeos 5330. 5-inch for Apeos 4830.



## Flexibility in office layout

Supports wireless LAN environment\*<sup>1</sup>.

- Supports free addressing in the office with Wi-Fi support
- Up to five Wi-Fi Direct multifunction devices can be connected at the same time
- Supports direct mobile printing\*<sup>2</sup>
- Print Utility, AirPrint, and Mopria® Print Service are supported

\*1: Optional.

\*2: When connecting to Wi-Fi Direct.

## Copy an ID card on one side of a sheet

- With the ID Card Copy feature, both sides of an ID card, such as a driver's license card or health insurance card, can be printed aligned with each other on one side of a sheet.

## Smartphone becomes a "portable operation panel"

Seamless connectivity with mobile devices for Copy, Fax, Print, Scan\*<sup>1</sup> jobs using the Print Utility\*<sup>2</sup> application.

- Mobile device can be used as an alternative UI for operations control to minimize common touch points
- Frequent settings can be saved as "Favourites"
- Directly send fax or email with the addresses stored in the smartphone
- Minimize printer touch points for hygiene reasons
- Quickly establish direct Wi-Fi connection by scanning the QR code on the user panel

Note: Connect to machine via wireless environment or Wi-Fi direct connection.

\*1: Scan to Mobile, E-mail, Scan to Folder.

\*2: It can be downloaded free of charge from Google Play™ or App Store.

## Various features saving time and effort in scanning operation

Scanned data can be transferred through a variety of methods including Email, URL, and send to PC (SMB/FTP/SFTP).

- Data can be sent by using multiple features simultaneously
- Improve your digitalization process with features including automatic orientation of scanned page to upright position, correcting the skewed page, or removing blank pages
- In addition to TIFF and JPEG, the scanned data can be converted to various formats such as PDF with searchable OCR enabled

# Safeguard important information

Information is an important asset which should be protected at all cost

## Protect from unauthorized user

---

Multiple options of setting user authorization allow administrator to select a right combination as per given environment.

- Local Authentication
- Authentication by Remote Server
- IC Card Authentication\*
- User-specific feature access
- Private Charge Print

\* Optional.

## Protects Data

---

Protects against any malicious intent of hacking, tampering with device / system settings.

- Encryption of stored data
- Uses TPM\* 2.0 chip for encryption key management
- Deletes settings and document information all at once

\* Trusted Platform Module

Protects the information by means of strong encryption while transferring it between devices, servers etc.

- Encryption of communication paths by SSL/TLS or IPsec
- Encryption when transferring via SMBv3 and SFTP
- Scan file encryption/signature
- Email encryption and signature by S/MIME
- TLS version limit
- Elliptic curve cryptography
- WPA3

## Protect from unauthorized access

---

Protects device settings at multiple levels by clearly demarking change restrictions for different target audience - End users, IT administrators and Service Engineers.

- Service representative operation restriction
- Account lock to prevent unauthorized access
- Information for changing the default password
- Warnings displayed when using global IP address

Prevents unauthorized program from installing without notice. Robust IT audits are supported with device data logs for easy tracking.

- Software signature verification
- Remote update restrictions
- IP address filtering
- Tampering detection at startup and automatic restoration when tampering is detected
- Prevention of tampering during operation
- Audit log
- Audit log system transfer

## Prevents operation errors

---

Prevents information leakage due to inadvertent mistakes by administrators and users.

- Scan documents to be delivered to fixed destination
- Re-enter fax recipient
- Annotations
- Watermark





Offices

## Efficiently combining A4 and A3 devices

The Apeos 5330 series has the same UI and features as A3 devices. This leads to the optimum use of both A3 and A4 devices in one office.

Counter services

## Reducing wasted time during customer service

Being compact, the Apeos 5330 series fits into a counter service area. You can copy or scan documents without leaving the counter and making your customer wait.



Stores

## Strengthening the integration of the headquarters and branch stores

It is possible to automate a series of jobs to scan and send documents to the headquarters by registering settings so that you can send documents with one touch of an icon.

This enables you to send reports easily even if you don't have a computer at hand.

### Initiatives for environmental consideration

We are working to develop environmentally conscious products, including technologies that reduce the power consumption of multifunction devices and printers to achieve lower environmental impact.



Fujifilm Group introduced the certification program in which we clarify the environmental value of each product by assessments at the time of product development, conduct the evaluation based on our in-house certification criteria and certify the products\* that are excellent in reducing environmental impact as "Green Value Products". This product was certificated as a "Silver" rank product that reduces environmental impact at a higher level than industries' standard.

\* Products and services excellent in reducing environmental impact are those designed in consideration of environmental impact throughout their life cycle from acquisition of raw materials, production, usage, disposition, to reuse.

### Initiatives for energy conservation

- Achieve both high image quality and energy conservation by equipping the LED printhead that enables space and energy saving design, as well as Super EA-Eco toner that has low-temperature fusing performance
- Reduce the power consumption with the smart power saving feature that solely powers on the required parts according to the functions being used by customers

### Initiatives for resources conservation

- Functions contributing to paper consumption reduction
  - Private Charge Print, Scan, Paperless Fax, Pages per Side/ Multiple-Up, 2-Sided Print\* etc.

\* All the print drivers provided by FUJIFILM Business Innovation Corp. are default to 2-Sided Printing setting at installation.

# Apeos 5330 / 4830

## Functions & Specifications

### Basic Specifications / Copy Function

Item	Description	
	Apeos 5330	Apeos 4830
Type	Desktop	
Memory Capacity	4 GB (Max: 4 GB)	
Storage Device Capacity*1	128 GB	
Scan Resolution	600 x 600 dpi	
Printing Resolution	1,200 x 1,200 dpi	
Warm-up Time*2	33 seconds or less (23 degrees Celsius room temperature)	
Recovery Time (Recovery Time from Sleep Mode)	20 seconds or less (23 degrees Celsius room temperature)	
Original Size	Maximum of A4, Letter, Legal*3 for both Sheet and Book	
Paper Size	Max	A4, Letter, Legal
	Min	A6*4 [64 x 127 mm when using Bypass Tray]
	Image loss width	Lead edge 4.0 mm, Trail edge 4.0 mm, Right/Left edge 4.0 mm
Paper	Paper Tray	60 to 220 gsm / 16 lb. bond to 122 lb. index
Weight*5	Bypass Tray	60 to 220 gsm / 16 lb. bond to 122 lb. index
First Copy Output Time	6.0 sec. (Letter / A4)	
Continuous Copy Speed*6	55 ppm (Letter) / 53 ppm (A4)      50 ppm (Letter) / 48 ppm (A4)	
Paper Tray Capacity*7	Standard	Standard Tray: 550 sheets Bypass Tray: 150 sheets
	Optional	550-Sheet Feeder: 550 sheets
	Max	2,350 sheets [Standard + 550-Sheet Feeder x 3]
Output Tray Capacity*7	250 sheets	
Power Supply	AC110-127 V +/- 10%, 12 A, 50/60 Hz	
Maximum Power Consumption	1,170 W AC110 V +/-10%, 1430 W (AC127 V +/-10%)	
	Sleep Mode: 0.3 W	
	Low Power Mode: 9 W	
	Ready Mode: 68 W	
Dimensions	W 470 x D 500*8 x H 582 mm / W 18.5 x D 19.7 x H 23.0"	W 420 x D 500*8 x H 565 mm / W 16.6 x D 19.7 x H 22.3"
	Weight*9: 29 kg / 64 lb.      27 kg / 60 lb.	

- \*1: The Storage Device Capacity is not totally available for customers.  
 \*2: It may change depending on usage conditions.  
 \*3: For Apeos 4830, the Legal size reading is from the Duplex Automatic Document Feeder.  
 \*4: When using A6 size paper with the Standard Tray, the optional A5 LEF / A6 Tray Guide is required.  
 \*5: It is recommended to use our recommended paper. Correct print output may not be possible depending on the requirement.  
 \*6: The speed may be reduced due to the image quality adjustment.  
 \*7: 80 gsm paper.  
 \*8: The motor part of Duplex Automatic Document Feeder rear is included.  
 \*9: Including Toner Cartridge.

### Print Function

Item	Description	
Type	Built-in type	
Paper Size	Max	A4, Letter, Legal [215.9 x 520 mm when using Bypass Tray]
	Min	A6*4 [64 x 127 mm when using Bypass Tray]
	Image loss width	Lead edge 4.0 mm, Trail edge 4.0 mm, Right/Left edge 4.0 mm
Continuous Print Speed*2	Same as the Basic Specifications / Copy Function	
Printing Resolution	Standard	[PCL Driver] Standard: 1,200 x 2,400 dpi, High Quality: 1,200 x 2,400 dpi, High Resolution: 1,200 x 1,200 dpi
	Optional	[Adobe® PostScript® 3™ Driver] High Speed (Standard): 600 x 600 dpi, High Quality: 1,200 x 2,400 dpi, High Resolution: 1,200 x 1,200 dpi
Page Description Language	Standard	PCL5 / PCL6
	Optional	Adobe® PostScript® 3™
Supported Operating System*3	Standard	[PCL Driver] Windows 11 (64 bit) / Windows 10 (32 bit / 64 bit) / Windows Server 2022 (64 bit) / Windows Server 2019 (64 bit) / Windows Server 2016 (64 bit) [Mac OS X Driver] macOS 14 / 13 / 12 / 11 / 10.15
	Optional	[Adobe® PostScript® 3™ Driver] Windows 11 (64 bit) / Windows 10 (32 bit / 64 bit) / Windows Server 2022 (64 bit) / Windows Server 2019 (64 bit) / Windows Server 2016 (64 bit) [Mac OS X Driver] macOS 14 / 13 / 12 / 11 / 10.15
	Interface	Standard Ethernet 1000BASE-T / 100BASE-TX / 10BASE-T, USB3.0 Optional Wireless LAN (IEEE 802.11a / b / g / n / ac)

- Note: XPS stands for XML Paper Specification.  
 \*1: When using A6 size paper with the Standard Tray, the optional A5 LEF / A6 Tray Guide is required.  
 \*2: The speed may be reduced due to the image quality adjustment. The printing speed may be reduced depending on the document.  
 \*3: Please refer to our official website for the latest supported OS.

### Scan Function

Item	Description	
Type	Color Scanner	
Original Size	Same as the Basic Specifications / Copy Function	
Scan Resolution	600 x 600 dpi, 400 x 400 dpi, 300 x 300 dpi, 200 x 200 dpi	
Scan Speed	Same as the Scan Speed for the Duplex Automatic Document Feeder	
Interface	Standard	Ethernet 1000BASE-T / 100BASE-TX / 10BASE-T
	Optional	Wireless LAN (IEEE 802.11a / b / g / n / ac)

### Fax Function (Optional)

Item	Description
Original Size	Max: A4, Legal
Recording Paper Size	Max: A4, Legal; Min: A5
Transmission Time	2 seconds and more but fewer than 3 seconds*1
Transmission Mode	ITU-T G3
Applicable Lines	Telephone subscriber line, PBX, Maximum 1 port*2 (G3-1 port)

- \*1: For Apeos 4830, the Legal size reading is from the Duplex Automatic Document Feeder.  
 \*2: When A4 size document with approximately 700 characters is transmitted in standard image-quality (8 x 3.85 lines/mm) and in high-speed mode (28.8 kbps or faster, JBIG). Only indicates the time for transmitting the image information and does not include the communication control time. The total communication time will vary depending on the contents of the document, the type of machine receiving the fax, and line condition.

### Duplex Automatic Document Feeder

Item	Description	
	Apeos 5330	Apeos 4830
Original Size / Paper Weight	Max: A4, Letter, Legal; Min: A5*1 60 to 128 gsm / 16 lb. bond to 34 lb. bond (In Duplex: 60 to 128 gsm)	
Capacity*2	100 sheets	50 sheets
Scan Speed*3	Copy (A4, Simplex)	B/W: 55 ppm (Letter) / 53 ppm (A4)      B/W: 50 ppm (Letter) / 48 ppm (A4)
	Scan	B/W: 53 ppm, Color: 53 ppm (1 pass, 2 sided scanning; B/W and Color 105ppm) [Standard Document (A4), 200 dpi, to Folder];      B/W: 48 ppm, Color: 48 ppm (1 pass, 2 sided scanning; B/W and Color 96ppm) [Standard Document (A4), 200 dpi, to Folder];

- \*1: The minimum custom size is 139.7 x 139.7 mm.  
 \*2: 80 gsm paper.  
 \*3: The scanning speed varies depending on the documents.

### 550-Sheet Feeder (Optional)

Item	Description
Paper Size	Max: A4, Letter, Legal Min: A5 Custom Size: 76.2 x 190.5 mm to 215.9 x 355.6 mm
Paper Weight	60 to 220 gsm / 16 lb. bond to 122 lb. index
Feeding Capacity*1 / Number of Tray*2	550 sheets x 1-tray
Dimensions	W 420 x D 465 x H 123*3 mm / W 16.6 x D 18.4 x H 4.9**3
Weight	6.6 kg / 15 lb.

- \*1: 80 gsm paper.  
 \*2: Up to 3 trays can be added.  
 \*3: When excluding installing connections.

### Caster (Optional)

Item	Description
Dimensions*1	W 725 x D 773 x H 90*2 mm / W 28.6 x D 30.5 x H 3.6*2
Weight	12.6 kg / 28 lb.

- \*1: Including the foot part.  
 \*2: When excluding installing connections.

### Cabinet (Optional)

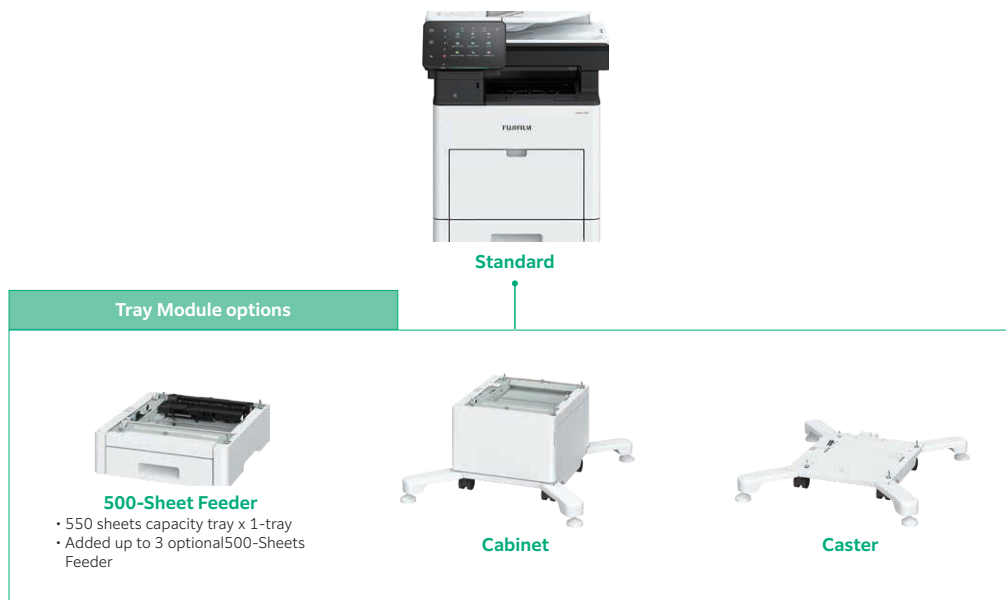
Item	Description
Dimensions*1	W725 x D773 x H 336*2 mm / W 28.6 x D 30.5 x H 13.3*2 (Inside Dimension: W 360 x D 415 x H 200 mm / W 14.2 x D 16.4 x H 7.9")
Weight	23.8 kg / 53 lb.

- \*1: Including the foot part.  
 \*2: When excluding installing connections.

If the storage media of the base unit fail, loss of received data, accumulated data, registered setting data, etc. may occur. In no event shall the Company be liable for any damages whatsoever arising from loss of data. Functional spare parts will be available for at least 7 years after the product is no longer manufactured.

# Hardware configuration

## Optional



## Various configurations



# FUJIFILM

FUJIFILM Business Innovation Corp.

Headquarters

9-7-3, Akasaka Minato-ku, Tokyo 107-0052

TEL: +81-3-6271-5111

[fujifilm.com/fbglobal](http://fujifilm.com/fbglobal)

The available model varies depending on the country / region. Please ask the sales representatives for details.

The product specifications, appearance and other details in this brochure are subject to change without notice for improvements.

**Reproduction Prohibitions** Please note that reproduction of the following is prohibited by law : •Domestic and foreign currencies, government-issued securities, and national bonds and local bond certificates. •Unused postage stamps, post cards, etc. •Certificate stamps stipulated by law. •Reproducing works forming the subject matter of copyright (literary works, musical works, paintings, engravings, maps, cinematographic works, drawings, photographic works, etc.) is not permitted unless the reproduction is for the purpose of personal use, family use or other similar uses within a limited circle.

**Trademarks** •FUJIFILM and FUJIFILM logo are registered trademarks or trademarks of FUJIFILM Corporation. •Apeos, DocuWorks, Working Folder, and Cloud Service Hub are registered trademarks or trademarks of FUJIFILM Business Innovation Corp.

•Microsoft, Active Directory, Azure, Microsoft Entra, Microsoft Edge, Excel, OneDrive, PowerPoint, SharePoint, Microsoft Teams, Windows, and Windows Server are registered trademarks of US Microsoft Corporation in the U.S. and other countries. •Apple, Mac, macOS, OS X, AirPrint, and AirPrint logo are trademarks of Apple Inc. registered in the U.S. and other countries and regions. •Adobe, Adobe logo, PostScript, and PostScript logo are either registered trademarks or trademarks of Adobe in the United States and/or other countries. •Mopria, the Mopria Logo, and the Mopria Alliance word mark and logo are registered and/or unregistered trademarks and service marks of Mopria Alliance, Inc. in the United States and other countries. •QR Code is a registered trademark of DENSO WAVE INCORPORATED. •All product names and company names mentioned in this brochure are trademarks or registered trademarks of their respective companies.



### For Your Safety

Before using the product, read the Instruction Manual carefully for proper use. Use the product with the power source and voltage specified. Be sure to establish ground connection. Otherwise, electronic shock may result in the case of a failure or short circuit.